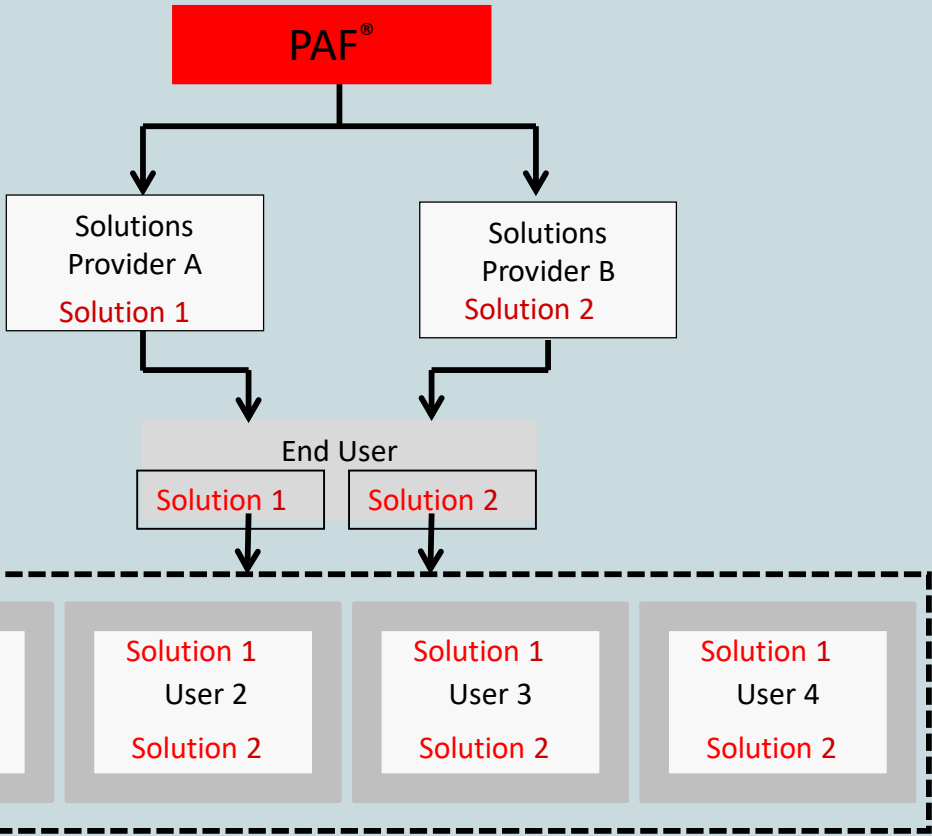


Determining how many Users of PAF to License



Guidance

- If 2 different Solutions Providers (Solutions Provider A and Solutions Provider B) both provide an End User with a PAF Solution then 2 sets of Licence Fees are payable
- Multiple Residence & Not Yet Built can be licensed in a similar way (additional Licence Fees apply)

Licence Fees

- Licence Fees are calculated on a per User basis (note definition of a User is “an individual authorised by an End User to use a Solution”)

Apply your knowledge

A Licence Fee is due for each Solution provided to the End User by each Solutions Provider (Licensee)

In this example:

- Solutions Provider A to license 4 Users
- Solutions Provider B to license 4 Users

