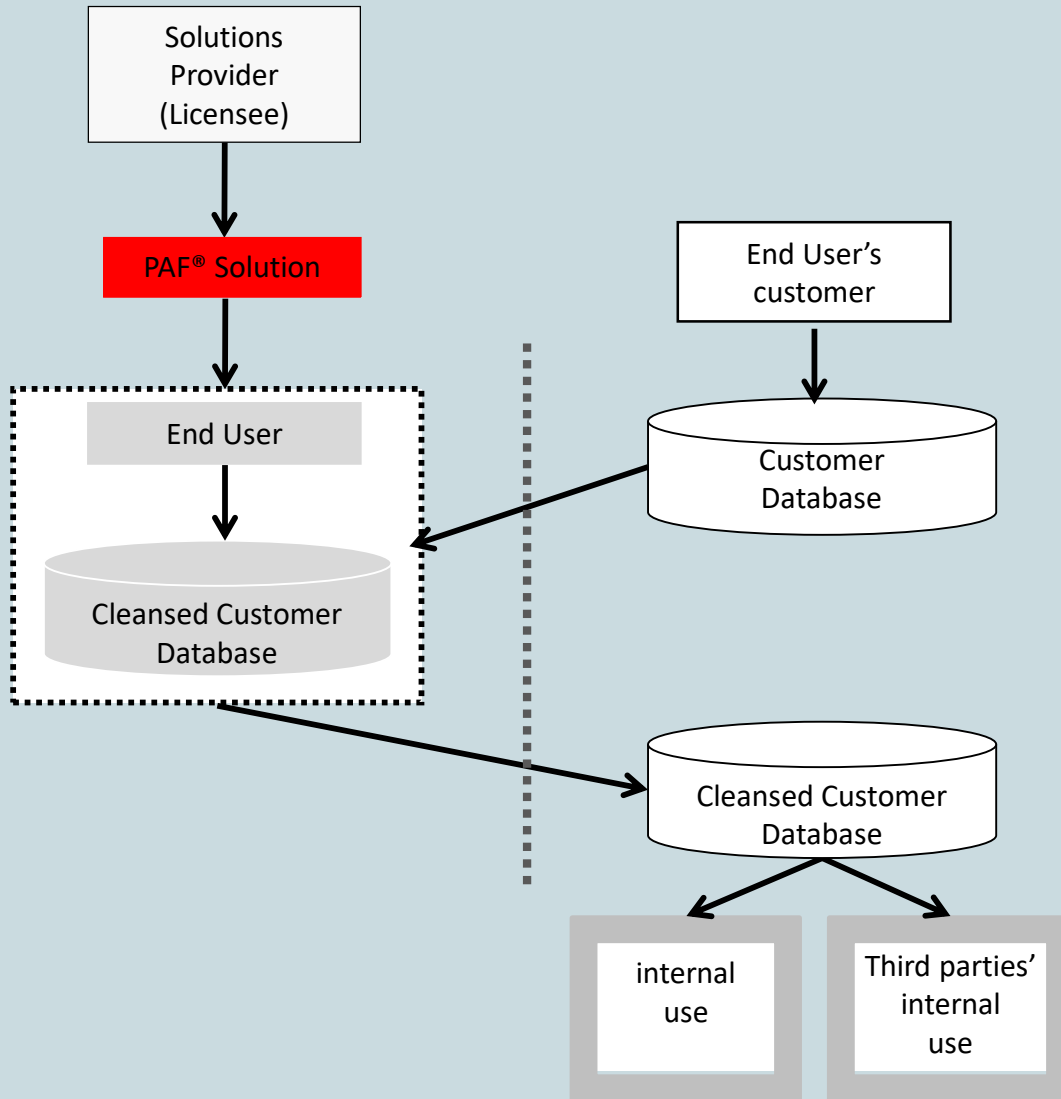


# Cleansing Databases for Use by other Organisations (Bureau Services)



## Guidance -

- Bureau Services occurs when Cleansed data is passed back to an End User Customer
- The annual Bureau fee is based on the number of records processed the previous year
- A Bureau needs to be licensed as an End User
- Licence Fees are due for each User using PAF
- Multiple Residence & Not Yet Built are licensed in a similar way (additional fees apply)

## Bureau Fees

Number of records cleansed or processed	Fee (per annum)
Up to 1 million	£270
Over 1 Million up to 10 million	£800
Over 10 million up to 100 million	£4,000
Over 100 million	£10,650

Apply your knowledge

